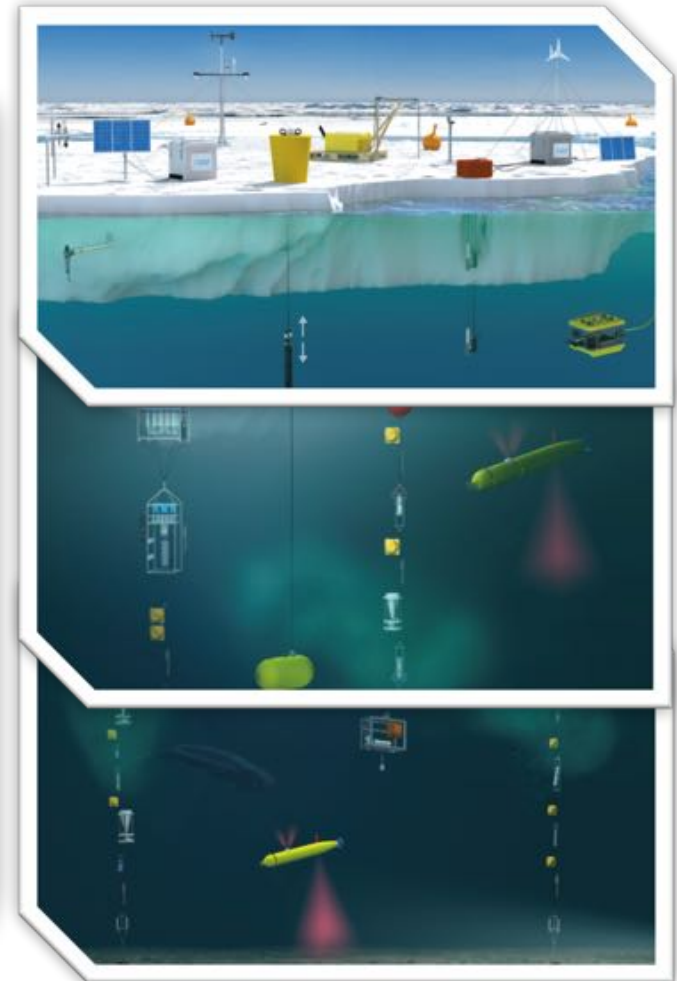
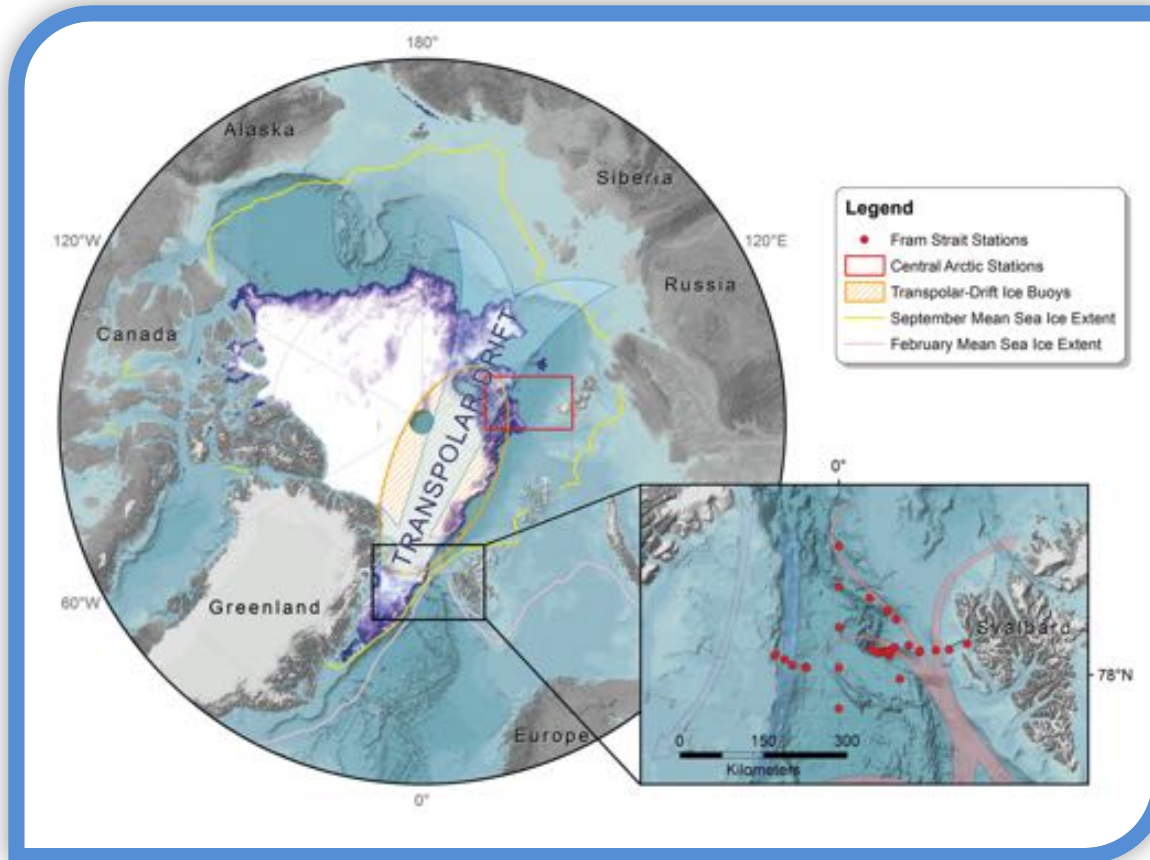
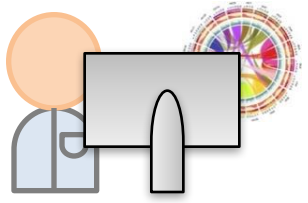


Frontiers for Arctic Marine Monitoring (FRAM) programme

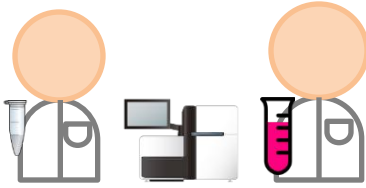


human and 'has role' 'bioinformatician'



functional diversity analysis

human and 'has role' 'laboratory researcher'



DNA extraction and sequencing

human and 'has role' 'field sampler'



water sampling

Ice sheet

monitors



device and 'has role' 'ocean health monitoring server'

has output

ocean health indicator

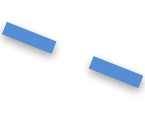
evaluates



human and 'has role' 'policy analyst'



reports on





PL Buttigieg
@ AWI



**An OWL-based community ontology
handling the semantics of environmental
entities using OBO best practices**

environmentontology.org

includes

envoCryo

bundling cryosphere semantics

partly seeded by the NSIDC
sea ice ontologies

A rough illustration of the semantic gradient

Stronger semantics

ENVO aims for a high degree of expressivity, thus advanced querying and data mobilisation options

Ontologies

Taxonomies

Data models

Controlled vocabularies

Thesauri

Glossaries

Weaker semantics

Defined in the Basic Formal Ontology

RELIATION TO TIME	CONTINUANT				OCCURRENT		
	INDEPENDENT		DEPENDENT				
GRAIN							
ORGAN AND ORGANISM	Organism (NCBI Taxonomy)	Anatomical Entity (FMA, CARO)	Environments (ENVO)	Organ Function (FMP, CPRO)	Phenotypic Quality (PATO)	Biological Process (GO)	Environmental processes (ENVO)
CELL AND CELLULAR COMPONENT	Cell (CL)	Cellular Component (FMA, GO)		Cellular Function (GO)			
MOLECULE	Molecule (ChEBI, SO, RnaO, PrO)			Molecular Function (GO)		Molecular Process (GO)	

Adapted from the Open Biomedical Ontology (OBO) Foundry proposal



is concerned with...

...systems

biomes

ecoregions

ecozones

habitats ...

...planetary parts

coral reefs

cryconite holes

holothurian guts

melt ponds...

...materials

névé

brine

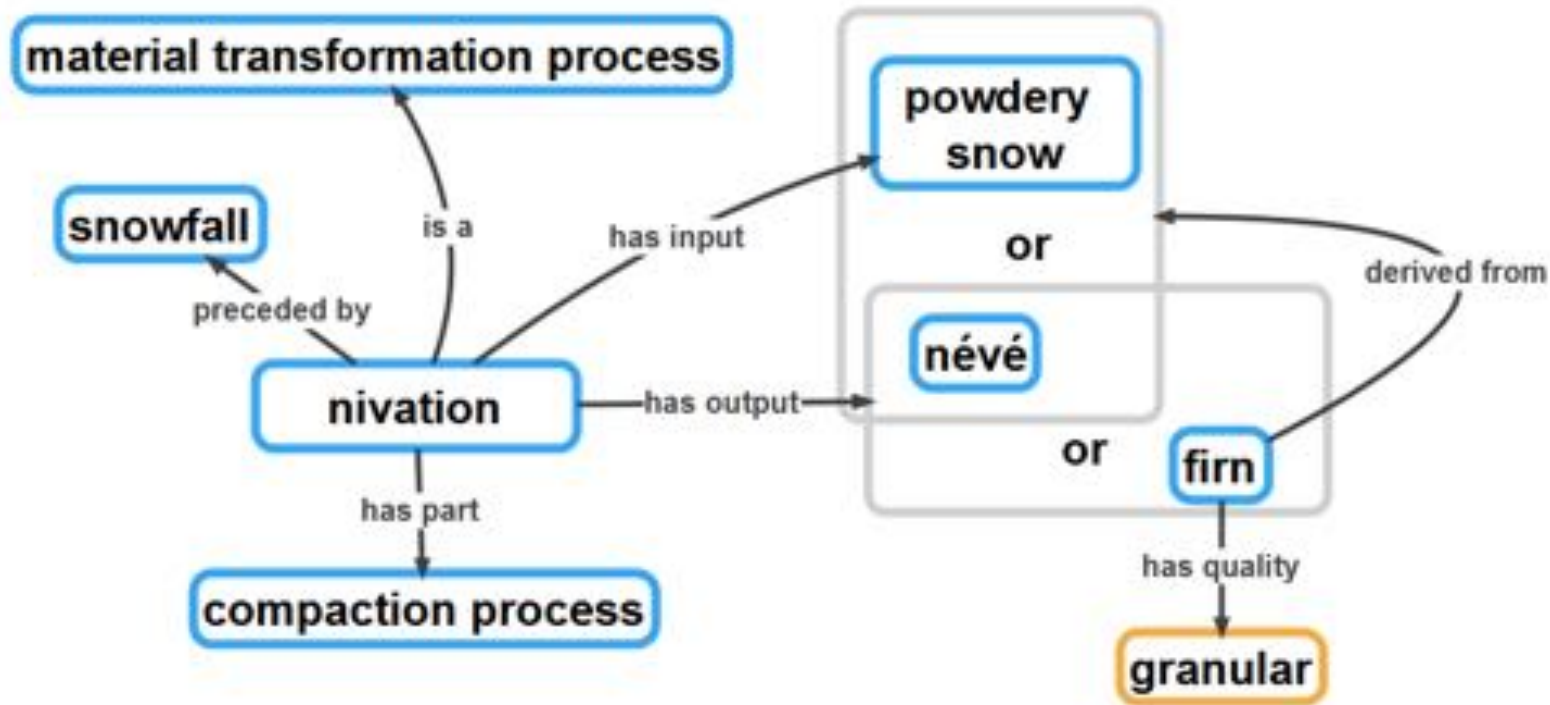
permafrost...

...processes

glacial ablation

nivation...

A fragment of envoCryo's nivation semantics



envoCryo

PATO

Each node links to many others in ENVO and other interoperating ontologies

SDGI



UN
environment



SWEET



AgrO



Berkeley
UNIVERSITY OF CALIFORNIA



earth
microbiomeproject



ChEBI



University of Colorado
Boulder



Data Detektiv

FOOD



BC Centre for Disease Control



SFU

UC DAVIS
UNIVERSITY OF CALIFORNIA



King Abdullah University
of Science and Technology



**A semantic interface for the
Sustainable Development Goals**

“Ecosystem services”

“Healthy environments, healthy people”

“People, Planet, Profit”

“Planetary life-support systems”



Sustainable Development Goals

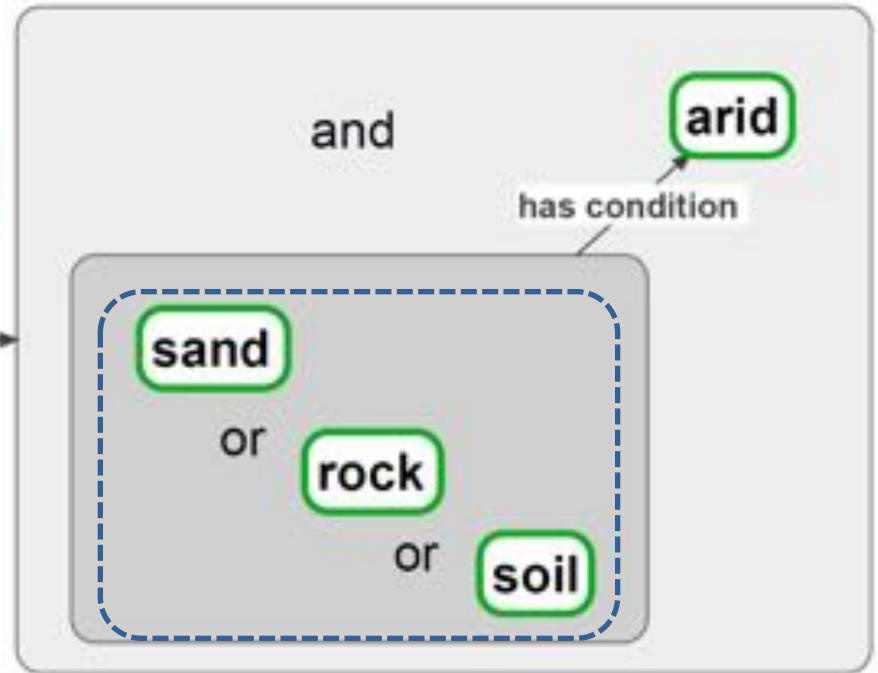
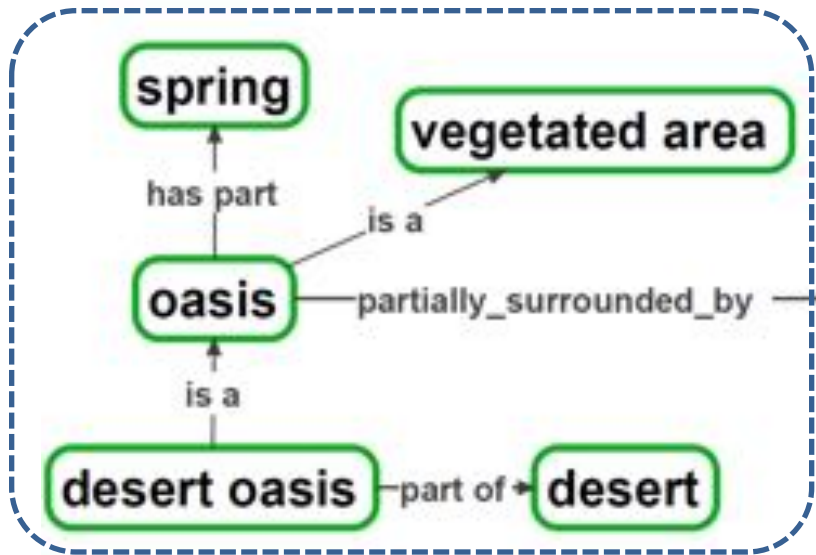


Multilateral Environmental Agreements



Supplementary slides

Planetary parts



Materials

Biome

CHEBI

environmental material

ENVO

